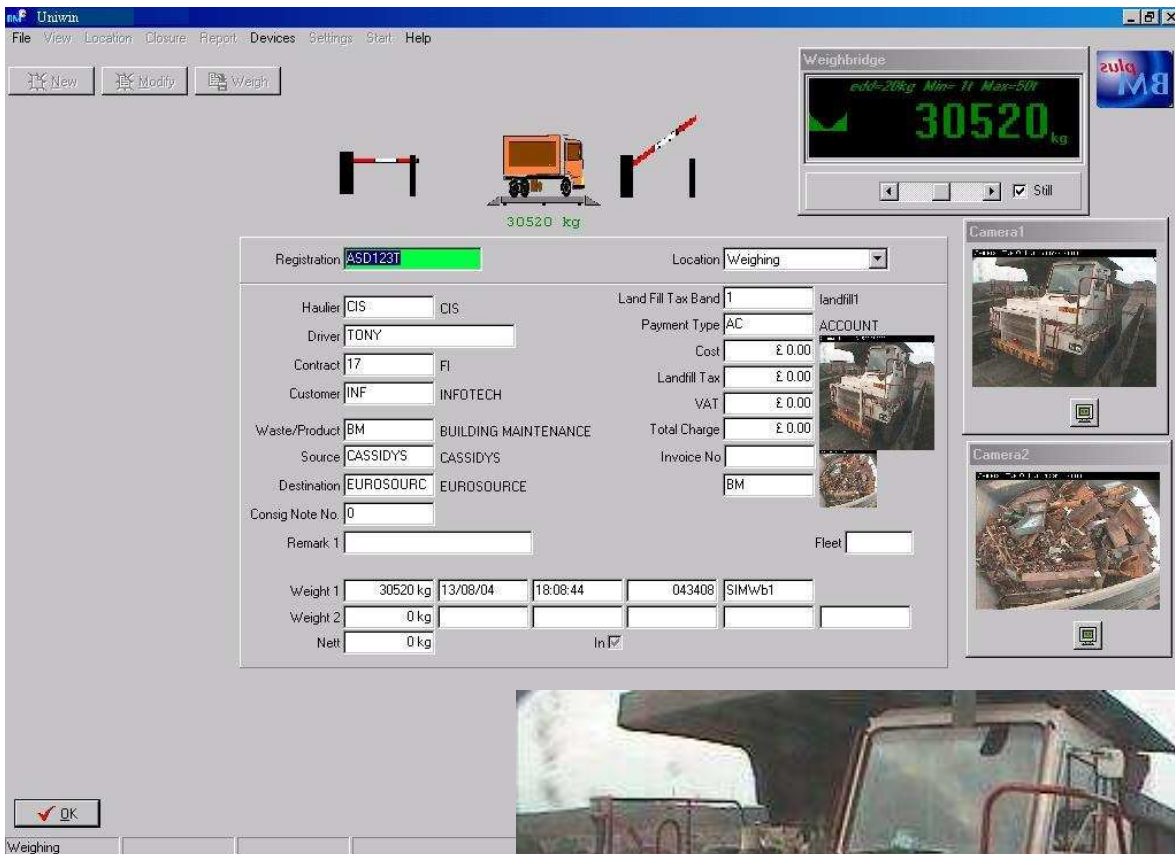


UNIWIN VERSION 3.0

The Most Flexible Weighbridge Solution In The World

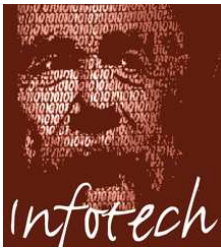


The features include:

- Choice of database platforms
- Bespoke weighbridge dialogue
- Full audit trail
- Approved solution
- Interface to other devices
- Customer specific templates for every type of application imaginable
- Master/Slave link to HQ
- Camera interface
- Touch screen support
- Fax and Email direct Multi-lingual



Weights and Measures (NMI) Approved Weighbridge Software



UNIWIN VERSION 3.0

Applications

File Handling

All files within Uniwin operate using a menu selection, button or short key.

Daily, Weekly, Monthly In and Out totals can be maintained together with financial information.

Application Dialogues

Dialogues are specific to user requirements and are therefore specific to the requirements of the site. All dialogues are simple in design, easy to operate and can be controlled fully using the keyboard only.

Reports

In addition to standard reports the operator can create a bespoke report using a simple choose report dialogue. All reports are specified using a date range and selectable by all defined file criteria.

Once previewed the report can be exported for archive or further processing.

Import/Export

Data can be imported on batch or in real-time mode into the file systems for use within the weighing dialogue. Exports of transaction information can be completed as part of a daily closure or immediately following a weighing transaction.

Driver Terminal

Uniwin can control a variety of driver operated terminals including touch screen and radio technology. Badge reading and bar code generation is all standard within the package including Traffic management, barrier and traffic light control.

Filling

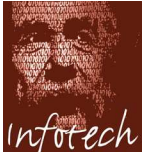
Lorry loading and filling control are all standard features within the kernel of the application.

Total Management

At every point within the transaction cycle Uniwin can control the activity. Local and remote Uniwin can control and manage all your site activities.

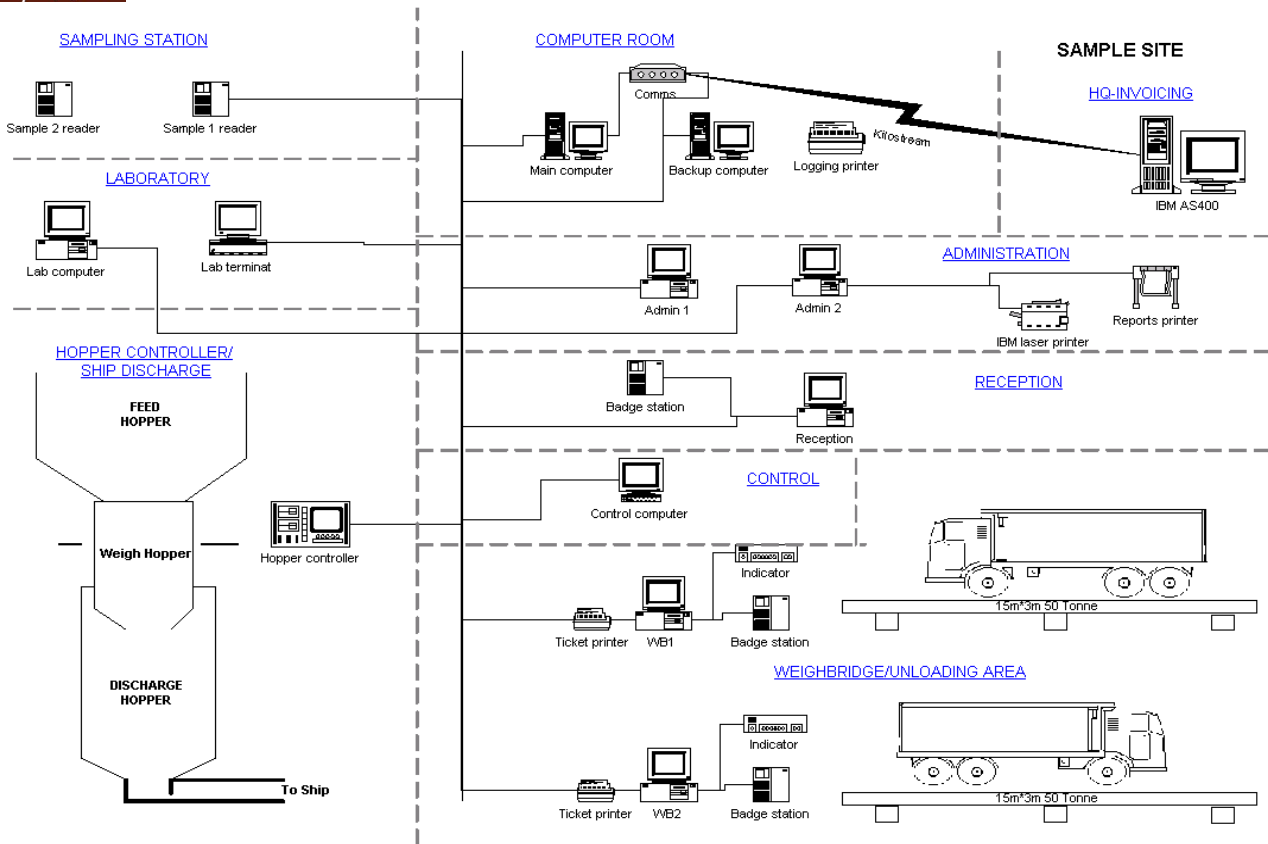
The screenshot displays two windows from the Uniwin software. The top window, titled 'Customers', is a form for entering customer details. The 'Customer Code' is 'INF'. The 'Name' is 'INFOTECH', 'Contact Name' is 'Tony', 'Street' is 'The Old School House', 'Town' is 'Arrow, Alcester', 'County' is 'Warwickshire', and 'Post Code' is 'B49 5BL'. Financial details include 'Credit Limit' of £ 0.00, 'Credit Level' of £ 1,478.82, and 'Amount Due' of £ 1,478.82. The bottom window, titled 'Choose Report', shows a table of reports with columns for Reg. No., Customer Name, Waste/Pro Description, Source, Customer Name, Destination Name, Ticket, Nett, Date, Time, and Direction. The table lists various waste products and their corresponding reports, with a total of 221 reports and a net weight of 1748180 kg.

Reg. No.	Customer Name	Waste/Pro Description	Source	Customer Name	Destination Name	Ticket	Nett	Date	Time	Direction		
DA21085	OTHER	OTHER	NMD	NBARY SMOURNE LANDFELL	AUGHNAGUN	021572	2840 kg	14/06/04	09:44:53	inbound		
BZ21771	OTHER	OTHER	NMD	NBARY SMOURNE LANDFELL	AUGHNAGUN	021655	0 kg	15/06/04	13:07:27	inbound		
T178X06	OTHER	OTHER	NMD	NBARY SMOURNE LANDFELL	AUGHNAGUN	021989	17900 kg	22/06/04	11:08:35	inbound		
T178X06	OTHER	OTHER	CAS	CVIC AMBNEY	LANDFELL AUGHNAGUN	021990	16500 kg	22/06/04	11:16:56	inbound		
N656R9B	RESERVE P&E SERVICES	CW	COMMERCIAL	NMD	NBARY SMOURNE LANDFELL	AUGHNAGUN	021570	300 kg	14/06/04	09:31:51	inbound	
ASD122T	RSC	ROAD SAFETY	CW	COMMERCIAL	CAS	CVIC AMBNEY	LANDFELL AUGHNAGUN	021991	10540 kg	22/06/04	11:17:11	inbound
90DL131	SCLONYX	SCLONYX	CW	COMMERCIAL	NMD	NBARY SMOURNE LANDFELL	AUGHNAGUN	021494	16760 kg	11/06/04	11:41:28	inbound
ENC2736	SCLONYX	SCLONYX	CW	COMMERCIAL	NMD	NBARY SMOURNE LANDFELL	AUGHNAGUN	021515	9340 kg	11/06/04	13:59:30	inbound
90LH809	SCLONYX	SCLONYX	CW	COMMERCIAL	NMD	NBARY SMOURNE LANDFELL	AUGHNAGUN	021543	19400 kg	12/06/04	09:21:41	inbound
90LH809	SCLONYX	SCLONYX	CW	COMMERCIAL	NMD	NBARY SMOURNE LANDFELL	AUGHNAGUN	021554	19600 kg	12/06/04	11:57:32	inbound
M602RVU	SCLONYX	SCLONYX	CW	COMMERCIAL	NMD	NBARY SMOURNE LANDFELL	AUGHNAGUN	021862	21500 kg	15/06/04	13:53:38	inbound
N661LFR	WMS	WASTE	CW	COMMERCIAL	NMD	NBARY SMOURNE LANDFELL	AUGHNAGUN	021514	7460 kg	11/06/04	13:57:47	inbound
N661LFR	WMS	WASTE	CW	COMMERCIAL	NMD	NBARY SMOURNE LANDFELL	AUGHNAGUN	021629	7320 kg	15/06/04	09:18:48	inbound
221						000221	1748180 kg					



UNIWIN VERSION 3.0

Total Site Management



- Standalone: Single PC linked to one or more weighbridges
- Unmanned: PC linked to weighbridges and driver terminals
- Multi-user: Networked computers linked to weighbridges
- Multi-term: Networked computers linked to weighbridges and driver terminal
- Multi-site: Multiple sites linked via the telephone system to a head office

Technical Stuff

The application can connect up to 10 communication ports and a single application can handle up to 30 devices. These devices can consist of any combination of weighbridges, badge readers, cameras, TCP hand-held units, binary device or relay interface devices.

Each application can have 10 unique dialogues catering for weighing dialogues, laboratory analysis, check dialogues, discount and reception screens.

Every application can have up to 30 base files allowing the application to provide any file system such as Customer, Supplier, Client, Product, Waste, Group, Contract, Pricing, Haulier, Source, Destination, Vehicle, Type, Stock etc.

Uniwin has a Multi-User capability allowing data to be shared over a spectrum of network topologies. In addition a range of Databases can be catered for based on customer preferences or company guidelines i.e (MSSQL, SYBASE SQL, PROGRESS, PARADOX)

A Master/Slave link is a standard feature within Uniwin allowing remote sites to link back to head office, transferring file and transaction information as part of a background scheduled process.

An Advanced TCP socket communication object allows groups of computers to share attached devices.

Support Contract

InfoTech operates a professional help-desk supporting all aspects of the application. Includes a direct dial-in connection, thereby providing a rapid response to all your support requirements no matter where in the world you are located.

InfoTech Solutions Limited

The Old School House
ARROW, ALCESTER
Warwickshire, England
Tel (+44)-(0)1789-400341